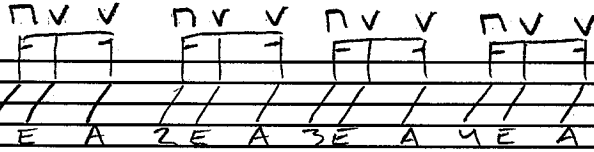


▽ = DOWN
 ▽ = UP

STRUM PATTERN + CHORD PROGRESSIONS 17

REPEAT EACH 8-12X
 SLOW-MED-FAST



① CMA5⁷

② AMI⁷

③ CMA5⁷

AMI⁷

④ CMA5⁷ AMI⁷

⑤ CMA5⁷ AMI⁷ CMA5⁷ AMI⁷

⑥ CMA5⁷ B

⑦ AMI⁷ F

⑧ CMA5⁷ DMI

G⁷ FMI

⑨ AMI⁷ GMI